

fiber options

OH-RR-1-LC Fiber SFP Data Sheet

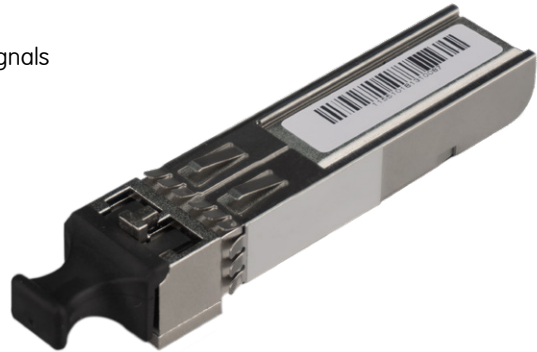
Dual Channel 3Gbit SDI Optical Receiver

- Dual channel SDI multi-rate optical receiver for 3G-SDI, HD-SDI and SD-SDI signals
- Support for SMPTE 424M, SMPTE 292M, SMPTE 259M, DVB-ASI
- Support for all wavelengths between 1260nm and 1620nm
- For use with yellobrik and Series 5000 product lines
- Pluggable and hot swappable
- LC Connectors - singlemode
- Lead free and RoHS compliant

The OH-RR-1-LC dual channel SDI optical receiver is an integrated part or plug in option for select LYNX Technik yellobrik and Series 5000 products. This module facilitates the conversion of two independent SDI optical signal into electrical signals for further processing within these products. Support is provided for all wavelengths between 1260nm and 1620nm according to ITU-T G694.2 (18 wavelengths)

The module accommodates 270Mbit / 1.485Gbit and 2.97Gbit SDI signals conforming to SMPTE 424M, 292M, 259M and DVB-ASI.

A socket, or "cage" is provided for the SFP in the supporting LYNX product for easy installation or upgrade. The SFP is hot swappable.



Shown with dust cap fitted

Specifications (each channel)

Parameter		Min	Typ	Max
Receiver Sensitivity	2.97 Gb/s	-18 dBm	-	-
	1.485 Gbit/s	-18 dBm	-	-
	270 Mbit/s	-18 dBm	-	-
Wavelength		1260nm	-	1620nm
Overload		-	-	-1 dBm
Loss of Signal Asserted		-35 dBm	-	-
Loss of Signal De-Asserted		-	-	-18 dBm
Optical Hysteresis		0.5 dB	2 dB	-
Operating Temperature Range		5°C	-	40°C
Power Supply Voltage		3.1 VDC	3.3 VDC	3.5VDC
Power Consumption		-	200 mA	300 mA
Humidity (non condensing)		-	-	90%

Ordering Information

EAN / UPC	Model	Description
4250479320758	OH-RR-1-LC	Dual Channel 3G SDI Fiber Receiver

Mechanical

Parameter	
Size (not including connector - typ)	57mm x 13.4mm x 12.4mm
Weight	50g
SFP Connector pinning	Proprietary
Fiber connections	LC / Duplex - Singlemode

Country of manufacture: Taiwan



Rev 1.2 Specifications subject to change

LYNXTechnik AG

www.lynx-technik.com

LYNX Technik AG
Brunnenweg 3
D-64331 Weiterstadt
Germany
PH +49 (0) 6150 1817 0
info@lynx-technik.com

LYNX Technik Inc
26366 Ruefher Ave.
Santa Clarita, CA 91350
USA
PH +1 (661) 251 8600
infousa@lynx-technik.com

LYNX Technik Pte Ltd
114 Lavender Street
CT Hub2 #05-92
Singapore, 338729
PH +65 6702 5277
infoasia@lynx-technik.com